

The logo for AirWave, featuring the word "AirWave" in a bold, sans-serif font. The "Air" is in blue and the "Wave" is in black. A registered trademark symbol (®) is located to the upper right of the "e".

THE HIGH PERFORMANCE SOLUTION
FOR MAXIMIZING OUTPUT WITH THE
AirWave®-Mini Packaging System

Ideal for decentralized packaging stations, AirWave®-Mini is the first choice. This small and simple machine produces air cushion chains quickly and reliably, right at the location where they are needed.

The adjustable production speed is a great advantage. Air cushions can be produced and used right away based on demand. Savings in time that pay off.

Simple operation and a compact and robust design complete the profile of your new packaging aid.





INNOVATIVE PACKAGING SOLUTIONS
WITH ADVANTAGES THAT PAY OFF FOR YOU

AirWave®-Mini

The advantages at a glance:

- Lightweight
- Easy operation with few function keys
- Roll change takes seconds
- Rolls are all very high volume
- Over 65 feet / 20 meters per minute (~ 200 cushions/minute)
- 0.8-1.2 mil / 20 – 30 µm film for optimum resource savings
- 100% recyclable material
- Low-maintenance and robust design
- Uses standard electric power

The AirWave®-Mini system is configured as follows as a starter set:

1 AirWave®-Mini

8 rolls of air cushion film

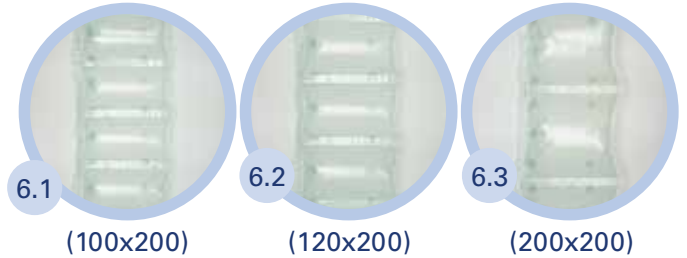
(type 6.x) of your choice, each 1480 ft/450 m, 1.2 mil/30 µm or

6 rolls of air cushion film

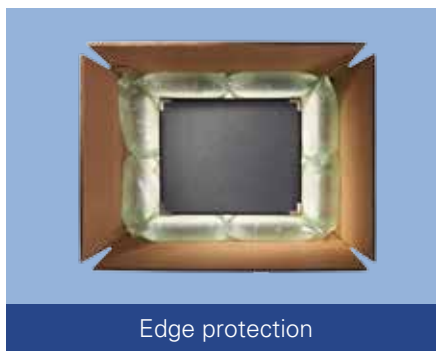
(type 6.xb) of your choice, each 2300 ft/700 m, 0.8 mil/20 µm

At the set price of: **\$ XXXX.00**

Please contact our consultants about special conditions for larger quantities. The prices are plus shipping for the complete set.



Weight	23 lb / 10.3 kg
Output	66 ft / 20 m per min
Quilt production	No
Chain production	Yes
Film type	Type 6 HD/LDPE
Film thickness	0.8-1.2 mil / 20-30µm
Length	2300 + 1480 ft / 700 + 450m per roll
Cushion sizes	3



AirWave Packaging LLC
999 South Oyster Bay Road, Suite 418
Bethpage, NY 11714

Phone: 516-997-3300
info@airwave-packaging.com
www.airwave-packaging.com